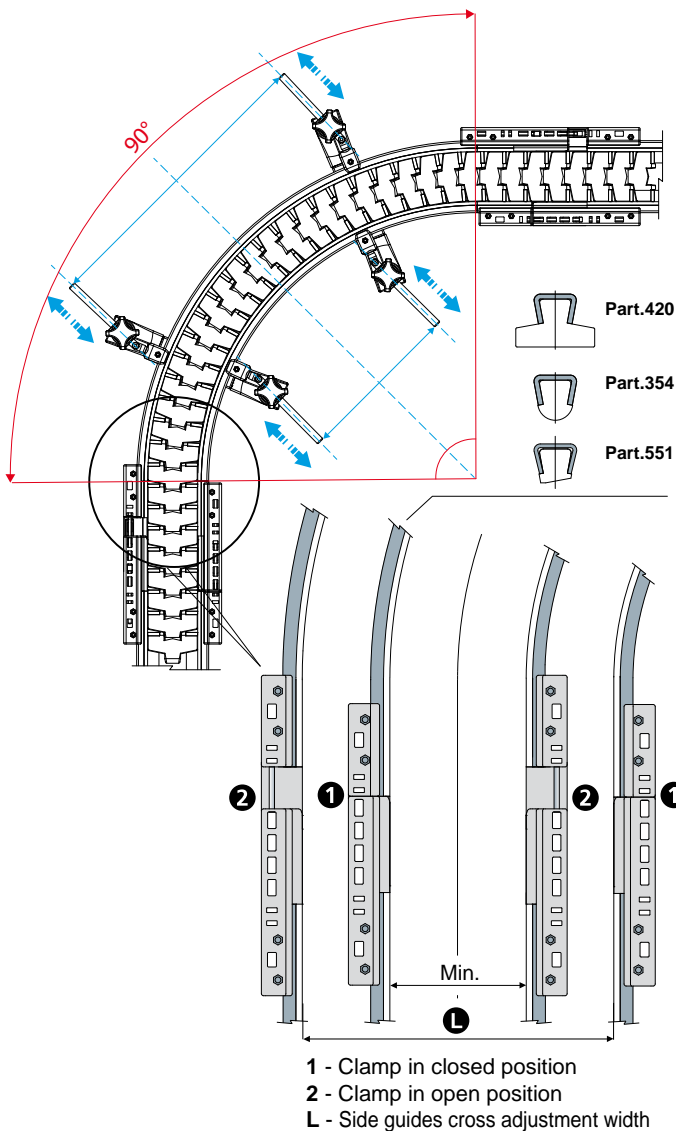
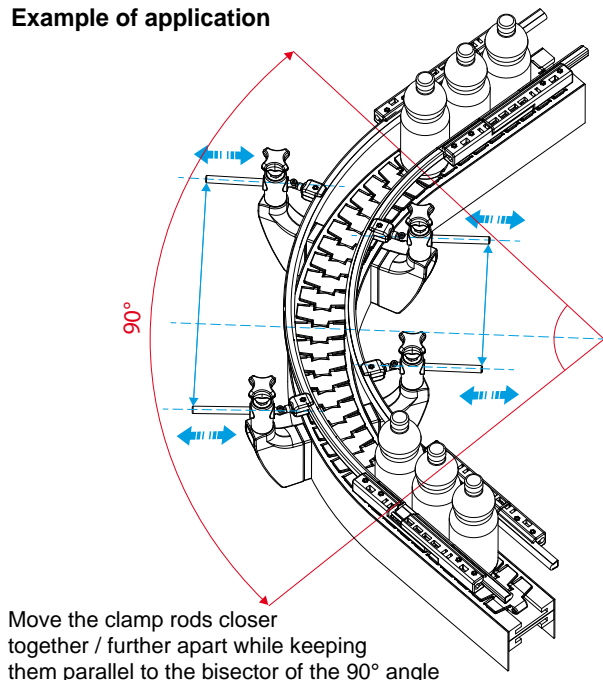


Product / chain guides and accessories

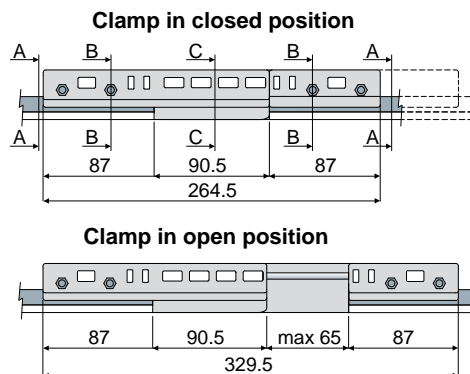


Example of application

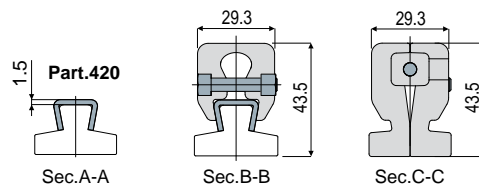


Sliding joint clamp Part. 549 (for guides with 1.5 mm thick metal profile)

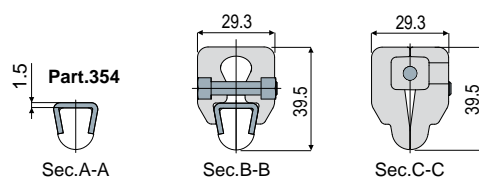
NEW



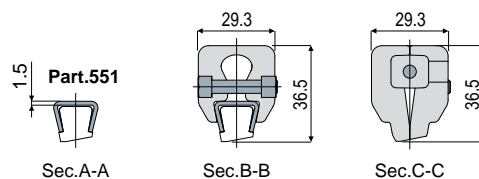
Cod. 90454 - Sliding joint clamp for Part.420



Cod. 90455 - Sliding joint clamp for Part.354



Cod. 90456 - Sliding joint clamp for Part.551 (H=15,5)



Type of guide to be joined	Code
Part.420	549 / 90454
Part.354	549 / 90455
Part.551 (H = 15,5)	549 / 90456

MATERIALS: Clamp in acetal white colour; guide pin and bolts in stainless steel.
FEATURES: The clamps allow the connection of the straight sections of the transport guides with the curved ones, compensating for the variations in curvature during format changes. To be used only together with guides with a 1.5 mm thick metal profile. Recommended maximum tightening torque: 0.4 Kgm.

BOX QUANTITY: 2 pieces.

ON REQUEST:

- Clamps: In different colours.
- Box quantity: According to your request.