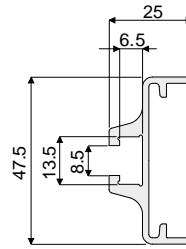
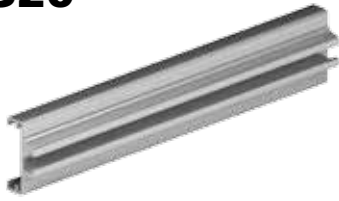


# Product guides and accessories

## Profile for side guides

### Part. 320



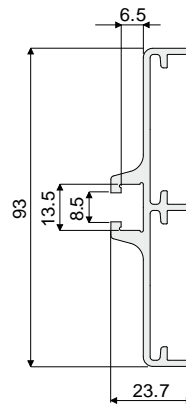
Type	Version	Code	Length
Side	Single	320 / 82917	3 Mt.

**MATERIALS:** Metal profile in anodized aluminium.

**FEATURES:** Supplied in bars of 3 meters length. To be used with guides Part.306, 325, 355, 467, 468, 464.

**BOX QUANTITY:** 2 bars of 3 meters (total 6 meters).

### Part. 321 Profile for side guides



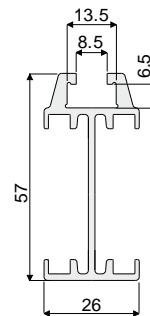
Type	Version	Code	Length
Side	Double	321 / 82918	3 Mt.

**MATERIALS:** Metal profile in anodized aluminium.

**FEATURES:** Supplied in bars of 3 meters length. To be used with guides Part.307, 326, 356, 474, 477.

**BOX QUANTITY:** 2 bars of 3 meters (total 6 meters).

### Part. 322 Profile for central guides



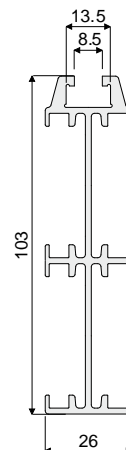
Type	Version	Code	Length
Central	Single	322 / 82919	3 Mt.

**MATERIALS:** Metal profile in anodized aluminium.

**FEATURES:** Supplied in bars of 3 meters length. To be used with guides Part.308, 327, 357, 475, 478, 480.

**BOX QUANTITY:** 2 bars of 3 meters (total 6 meters).

### Part. 323 Profile for central guides



Type	Version	Code	Length
Central	Double	323 / 82920	3 Mt.

**MATERIALS:** Metal profile in anodized aluminium.

**FEATURES:** Supplied in bars of 3 meters length. To be used with guides Part.319, 328, 358, 476, 479.

**BOX QUANTITY:** 2 bars of 3 meters (total 6 meters).