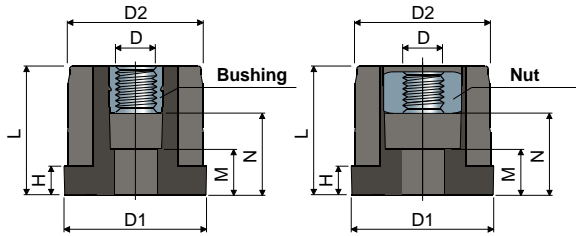
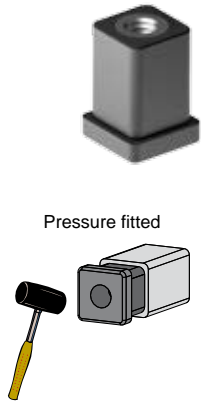


# Bushings

## Part. 336

(for conveyor flanks)  
Threaded bushings



Tube dimensions										With bushing
Outside (mm)	Thickness (mm)	Inside (mm)	Thread D	D1 (mm)	D2 (mm)	H (mm)	L (mm)	M (mm)	N (mm)	Code
20x20	1,5	17x17	M8	20x20	17x17	5	28	13	18	336 / 83138

Tube dimensions										With nut
Outside (mm)	Thickness (mm)	Inside (mm)	Thread D	D1 (mm)	D2 (mm)	H (mm)	L (mm)	M (mm)	N (mm)	Code
20x20	1,5	17x17	M8	20x20	17x17	5	28	13	18	336 / 84563

**MATERIALS:** Bushing in reinforced polyamide black colour; threaded insert or nut in nickel plated brass.

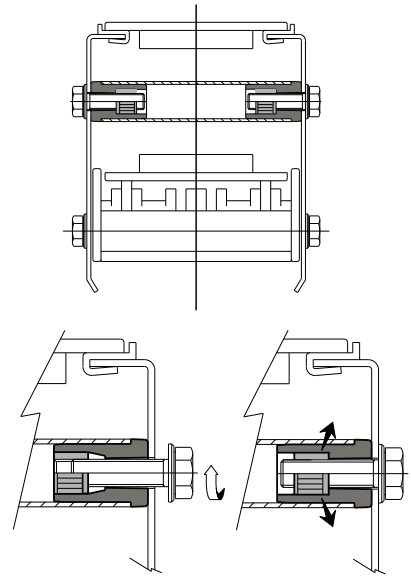
**FEATURES:** Supplied assembled. To be assembled in the conveyor flanks.

**BOX QUANTITY:** 48 pieces.

**ON REQUEST:**

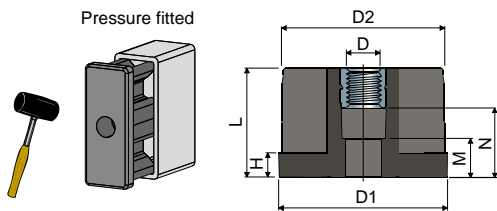
- Bushes: Special thickness tube.
- Box quantity: According to your request.

Example of application



## Part. 335 Threaded bushings

(for conveyor flanks)



Tube dimensions										Code
Outside (mm)	Thickness (mm)	Inside (mm)	Thread D	D1 (mm)	D2 (mm)	H (mm)	L (mm)	M (mm)	N (mm)	Code
20x50	2	16x46	M8	20x50	16x46	5	28	13	18	335 / 83128

**MATERIALS:** Bush in reinforced polyamide black colour; threaded insert in nickel plated brass.

**FEATURES:** Supplied assembled. To be assembled in the conveyor flanks.

**BOX QUANTITY:** 48 pieces.

**ON REQUEST:**

- Bushes: Special thickness tube.
- Box quantity: According to your request.

Example of application

