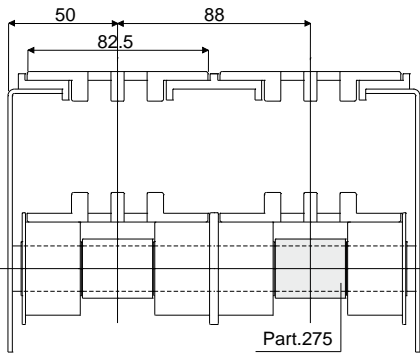
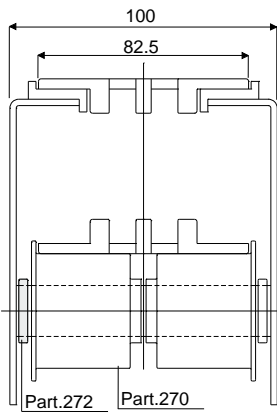


Return rollers

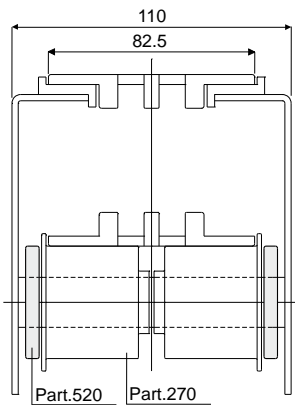
Example of application



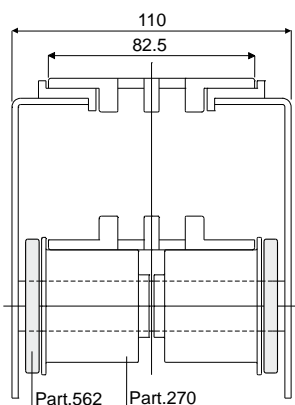
Example of application



Example of application



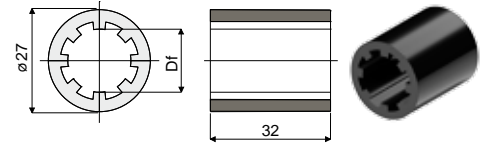
Example of application



Spacer for rollers for chain return

Part. **275**

Df Bore for pin of (mm)	Code
12	275 / 82056
16	275 / 82057
18	275 / 82058
20	275 / 82059



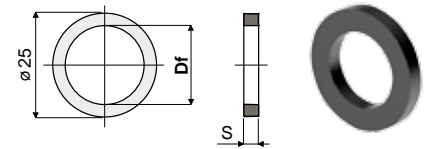
MATERIALS: Spacer made of polyamide black colour.
FEATURES: To be used as a spacer between the rollers.
BOX QUANTITY: 96 pieces.

- ON REQUEST:**
- Spacers: In different colours.
 - Box quantity: According to your request.

Spacer for rollers for chain return

Part. **272**

Df Bore for pin of (mm)	S	Code
15	3,5	272 / 82046
16	3,5	272 / 83331
	5	272 / 86091
20	3,5	272 / 82047
	5	272 / 85186



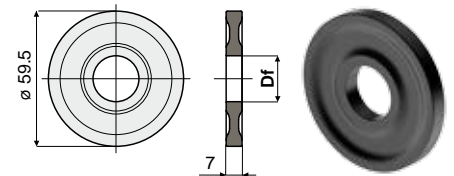
MATERIALS: Spacer made of polyamide black colour.
FEATURES: To be used as a spacer between the rollers.
BOX QUANTITY: 96 pieces.

- ON REQUEST:**
- Spacers: In different colours.
 - Box quantity: According to your request.

Spacer for rollers for chain return

Part. **520**

Df Bore for pin of (mm)	Code
20	520 / 87264



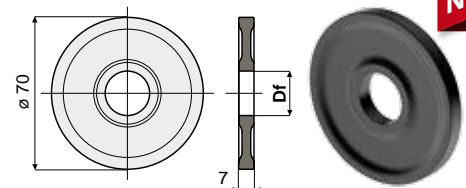
MATERIALS: Spacer made of polypropylene black colour.
FEATURES: To be used as a spacer between the rollers.
BOX QUANTITY: 96 pieces.

- ON REQUEST:**
- Spacers: In different colours.
 - Box quantity: According to your request.

Spacer for rollers for chain return

Part. **562**

Df Bore for pin of (mm)	Code
12	562 / 90835
16	562 / 90836
20	562 / 90837



MATERIALS: Spacer made of polypropylene black colour.
FEATURES: To be used as a spacer between the rollers.
BOX QUANTITY: 96 pieces.

- ON REQUEST:**
- Spacers: In different colours.
 - Box quantity: According to your request.