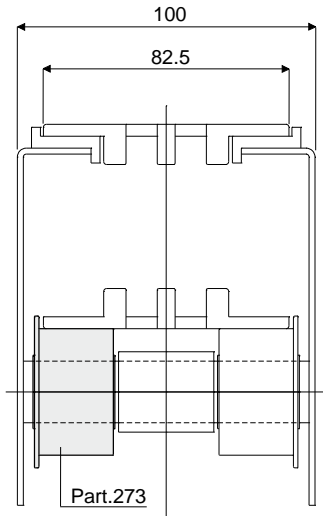


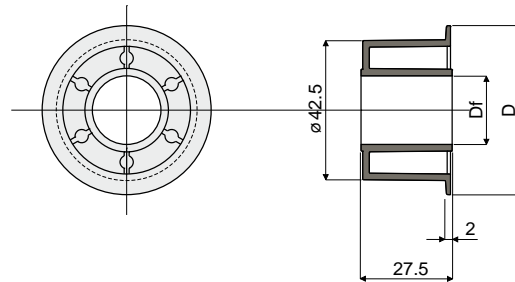
Return rollers

Example of application



Roller for chain return (with flange)

Part. **273**



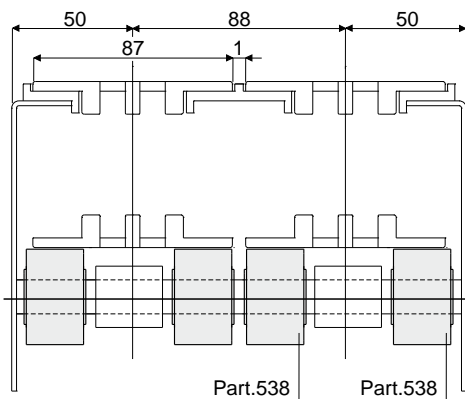
Df Bore for pin of (mm)	D = 51	D = 55
	Code	Code
12	273 / 82048	273 / 85337
16	273 / 82049	273 / 85338
18	273 / 82050	273 / 85339
20	273 / 82051	273 / 85340

MATERIALS: Roller made of polyamide black colour.
FEATURES: To be assembled in the chain return.
BOX QUANTITY: 96 pieces.

ON REQUEST:

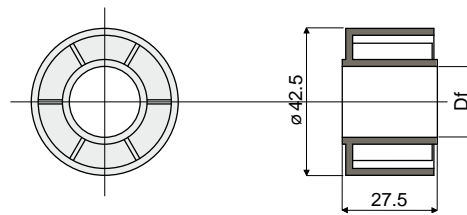
- Rollers: In different colours.
- Box quantity: According to your request.

Example of application



Roller for chain return (without flange)

Part. **538**



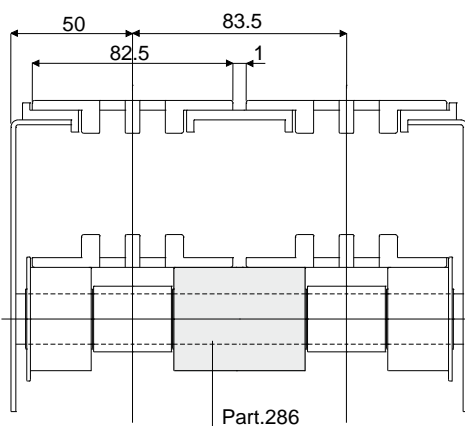
Df Bore for pin of (mm)	Code
12	538 / 88821
16	538 / 88822
18	538 / 88823
20	538 / 88824

MATERIALS: Roller made of polyamide black colour.
FEATURES: To be assembled in the chain return.
BOX QUANTITY: 96 pieces.

ON REQUEST:

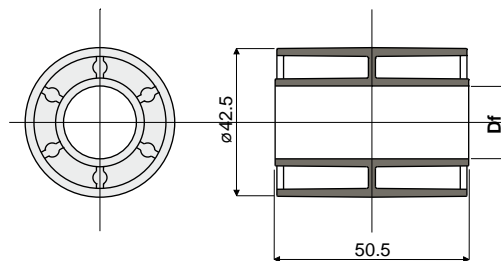
- Rollers: In different colours.
- Box quantity: According to your request.

Example of application



Double roller for chain return (without flange)

Part. **286**



Df Bore for pin of (mm)	Code
12	286 / 82532
16	286 / 82533
18	286 / 82534
20	286 / 82535

MATERIALS: Roller made of polyamide black colour.
FEATURES: To be assembled in the chain return.
BOX QUANTITY: 96 pieces.

ON REQUEST:

- Rollers: In different colours.
- Box quantity: According to your request.