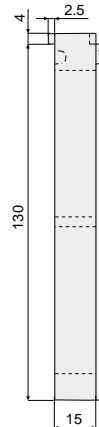
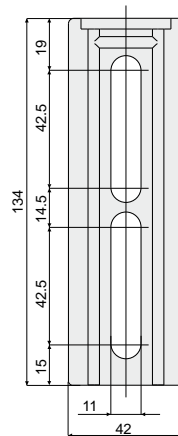


Guide rail brackets

Spacer for bracket

Part. **487**

With positioning lip Without positioning lip



With positioning lip	Without positioning lip
Code	Code
487 / 86191	487 / 86192

MATERIALS: Spacer made of reinforced polyamide black colour.

FEATURES: Accessory to be used with brackets Part.486, 488, 489, 490, 491.

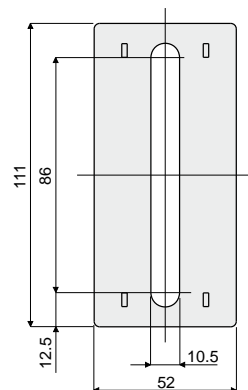
BOX QUANTITY: 24 pieces.

ON REQUEST:

- Spacers: In reinforced polypropylene, in different colours.
- Box quantity: According to your request.

Spacer for bracket

Part. **224**



Code
224 / 80676

MATERIALS: Spacer made of reinforced polyamide black colour.

FEATURES: Accessory to be used with brackets Part.215, 218, 219, 220, 242, 243, 244, 255, 280, 281.

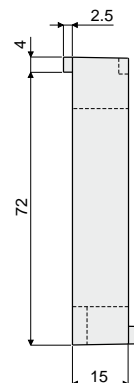
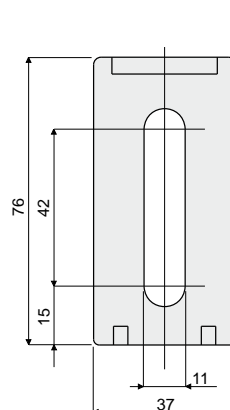
BOX QUANTITY: 24 pieces.

ON REQUEST:

- Spacers: In reinforced polypropylene, in different colours.
- Box quantity: According to your request.

Spacer for bracket

Part. **225**



Code
225 / 80677

MATERIALS: Spacer made of reinforced polyamide black colour.

FEATURES: Accessory to be used with brackets Part.213, 214, 216, 217, 209, 279, 557.

BOX QUANTITY: 24 pieces.

ON REQUEST:

- Spacers: In reinforced polypropylene, in different colours.
- Box quantity: According to your request.