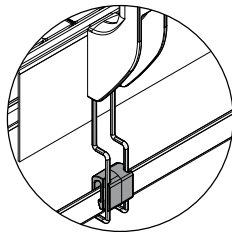


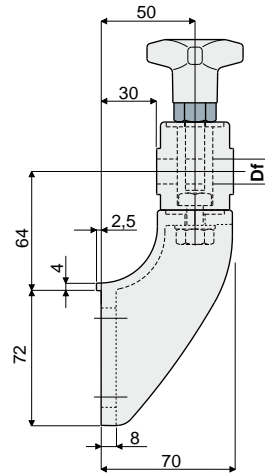
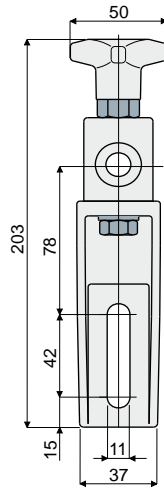
Guide rail brackets

Guide rail bracket (with adjustable head)

Part. **214**



Presetting for drip tray support (see on page 31)



Df Bore for pin of (mm)	Code
12	214 / 80755
14	214 / 80756
16	214 / 80757

MATERIALS: Bracket and knob made of reinforced polyamide black colour; hexagonal insert made of nickel plated brass; eyebolt, screw, nut and washers made of stainless steel AISI 304.

FEATURES: Max tightening torque 4 Kg·m.

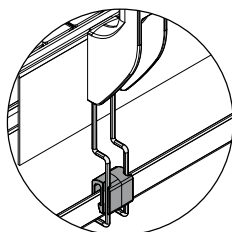
BOX QUANTITY: 24 pieces.

ON REQUEST:

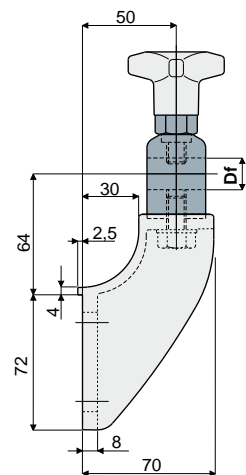
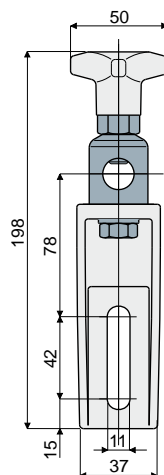
- Brackets: In reinforced polypropylene, in different colours.
- Box quantity: According to your request.

Guide rail bracket (with metal adjustable head)

Part. **216**



Presetting for drip tray support (see on page 31)



Df Bore for pin of (mm)	Code
14 - 16	216 / 80759

MATERIALS: Bracket and knob made out of reinforced polyamide black colour; head made out of stainless steel AISI 304; hexagonal insert made out of nickel plated brass; screw and washer made out of stainless steel AISI 304.

FEATURES: Possibility to use pins with diameter 14 and 16 mm. Max tightening torque 4 Kg·m.

BOX QUANTITY: 24 pieces.

ON REQUEST:

- Brackets: In reinforced polypropylene, in different colours.
- Box quantity: According to your request.